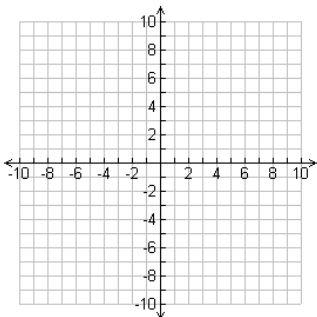
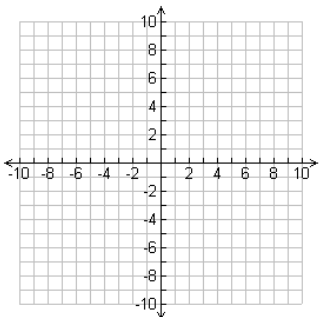
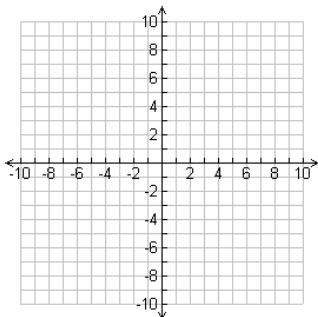
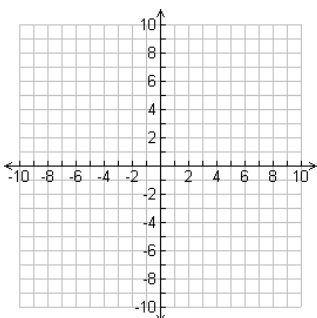
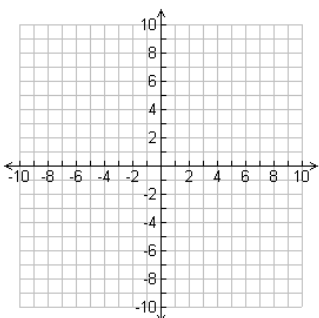
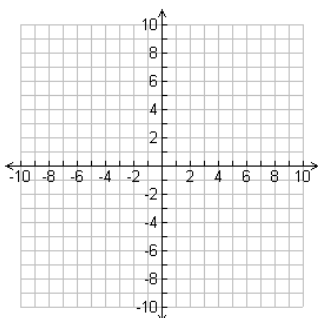


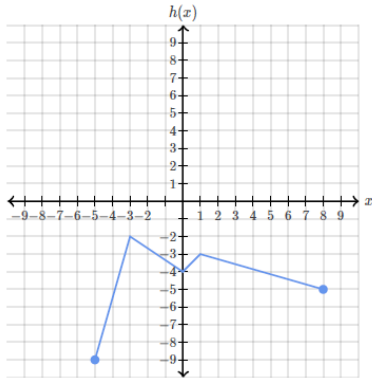
Name: _____ BLOCK _____

Math 10 100% Quiz Unit 3

Column 1.	Column 2. <i>Complete this column if you make an error in column 1.</i>	Column 3 <i>Complete this column if you make an error in column 2.</i>
<p>1. Graph $y=2x-3$</p> 	<p>Graph $y=3x+5$</p> 	<p>Graph $y=-2x+1$</p> 
<p>2. Graph $y=2x^2-3$</p> 	<p>Graph $y=x^2+1$</p> 	<p>Graph $y=-2x^2+5$</p> 

Name: _____ BLOCK _____

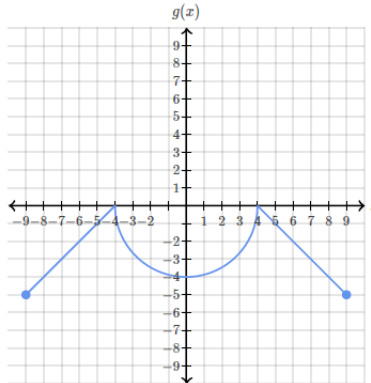
3. Determine the domain and range of the following in inequality form:



D: _____

R: _____

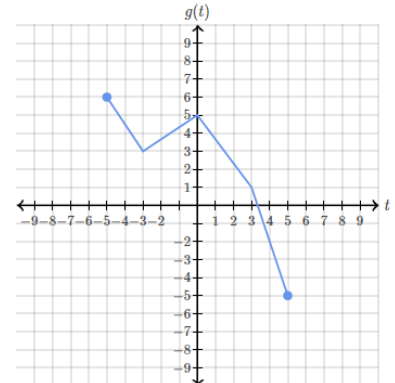
Determine the domain and range of the following in inequality form:



D: _____

R: _____

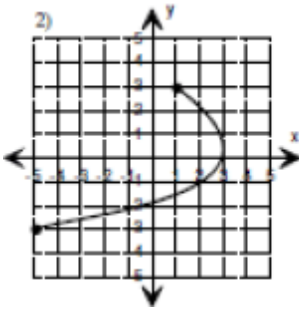
Determine the domain and range of the following in inequality form:



D: _____

R: _____

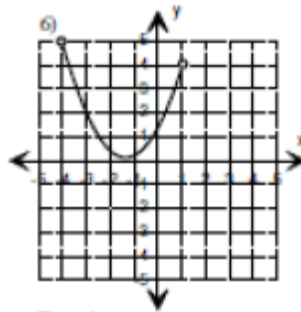
4. Determine the domain and range of the following using brackets.



D: _____

R: _____

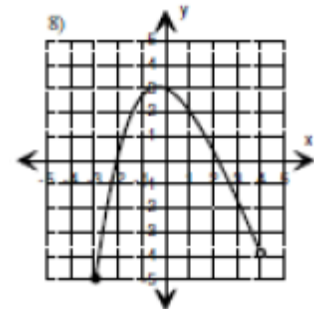
Determine the domain and range of the following using brackets:



D: _____

R: _____

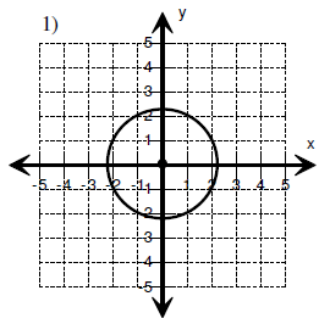
Determine the domain and range of the following using brackets:



D: _____

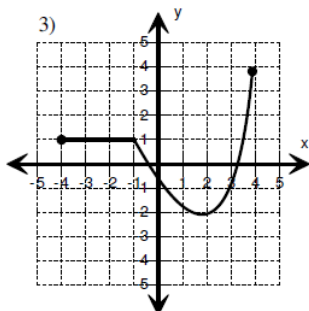
R: _____

5. Is this a function?



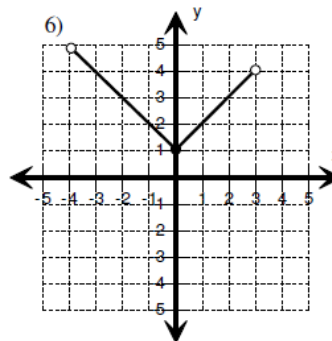
Function
 Not a Function

Is this a function?



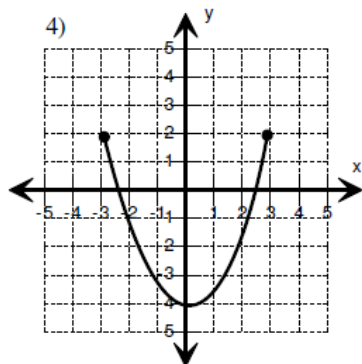
Function
 Not a Function

Is this a function?



Function
 Not a Function

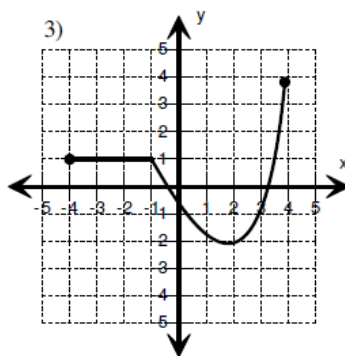
6. Determine the domain and range of the following.



D: _____

R: _____

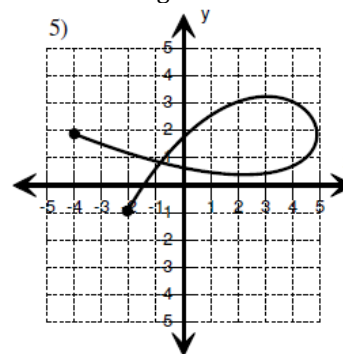
Determine the domain and range of the following.



D: _____

R: _____

Determine the domain and range of the following.



D: _____

R: _____

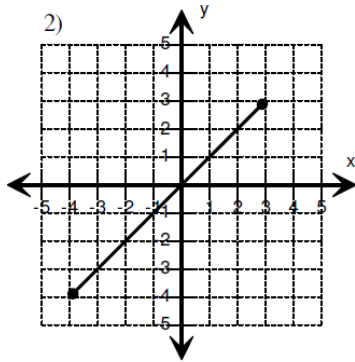
7. Find $f(-2)$ if $f(x) = 3x - 5$

Find $f(-2)$ if $f(x) = -3x + 7$

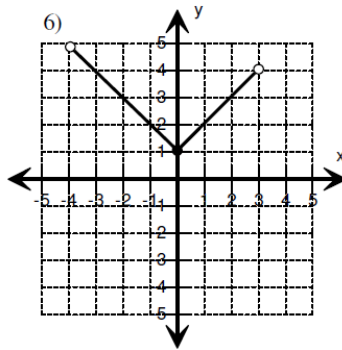
Find $f(3)$ if $f(x) = -2x - 5$

Name: _____ BLOCK _____

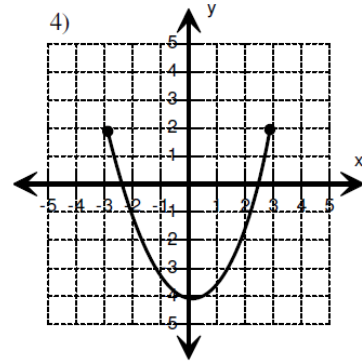
8. Given the following graph of $g(x)$
find $g(-2)$



Given the following graph of $g(x)$
find $g(3)$



Given the following graph of $h(x)$
find $h(0)$



9. A plumber charges a flat fee of \$50 to make house calls and then also charges \$65 an hour for his services. Write an equation to represent this scenario.

A cab driver charges \$3.50 to get into his car and then charges \$0.35 per k travelling. Write an equation to represent this scenario.

A computer technician charges \$50 an hour plus a service fee of \$35 to make a house call. Write an equation to represent this scenario.

10. What are the domain and range of the following equation?

$$y = \sqrt{x - 3}$$

What are the domain and range of the following equation?

$$y = 2x^2$$

What are the domain and range of the following equation?

$$y = 2x - 7$$